



Dear Parents/Carers,

It's been nice to see some levels of normality returning to school this week with the easing of restrictions. I've outlined what this means for us, as a school, on page 5.

Enrichment homework tasks for this half term are now 'live' on our website. Due to forthcoming SATs, Y6 will not be expected to submit any enrichment homework as they prepare for their examinations. It was lovely to see parents at our SATs information evening last night. If you were unable to make it, all information has been shared via Parentmail today.

We have local author, Dan Smith, visiting this Monday. Letters were sent home earlier this week with details of novels pupils will be able to purchase; prices range from £5.50 to £6.00 and pupils should bring their money in on Monday if they'd like to buy a book.

School places were offered this week and we have some Y8 pupils going to Haydon Bridge High and some off to Queen Elizabeth in Hexham. We will be working closely with both schools over the next few months to ensure that pupils feel as supported as possible with their move to high school. If you have any questions about this, please get in touch.

Have a lovely weekend,

Lindsay Hamilton

### Attendance this week:


91.3%

Thank you! We really appreciate all your efforts in getting to school on time, ready to start our day promptly.

### Did you know...?



Attendance	Description	Approx. days lost per year	Approx. weeks lost per year
98 – 100%	Excellent	0 to 4	Less than 1
95 – 98%	Good	5 to 9	1 to 2
93 – 95%	Satisfactory	10 to 13	2 to 3
90 – 93%	Unsatisfactory	14 to 19	4 to 6
>90%	Persistent Absence	More than 19	More than 4



**The government expects your child's attendance to be 95% or better.**  
**Schools are held to account for your child's attendance.**  
**Please remember holidays in term time will be unauthorised.**





## World Book Day!

To celebrate World Book Day, we've gone for ties this year! Pupils have designed their own tie related to their favourite book and took great pride in wearing them at our World Book Day Quiz today!





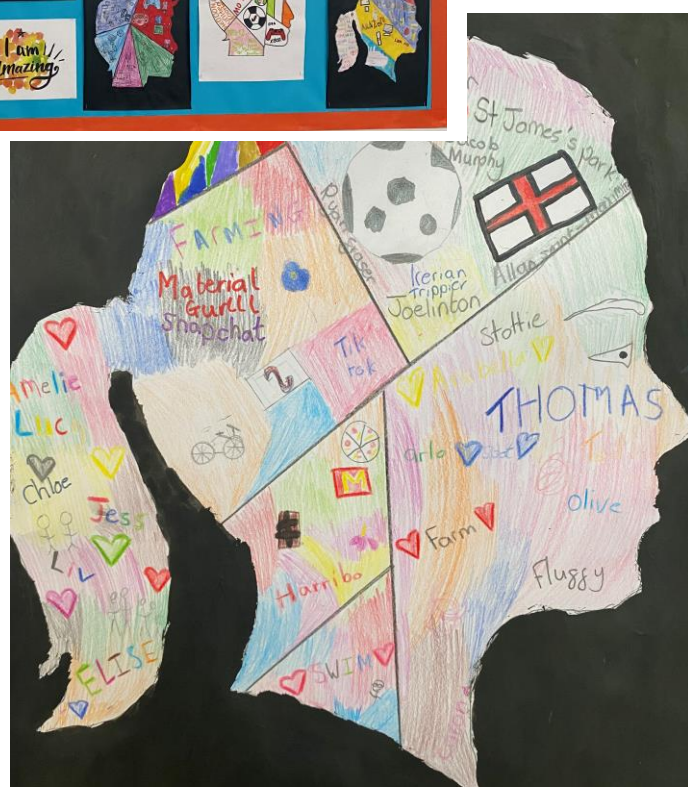
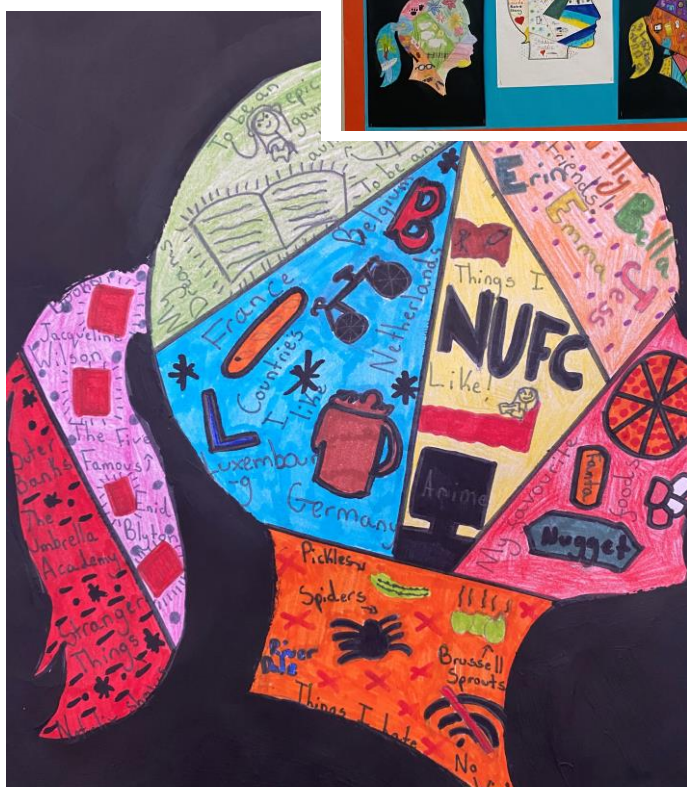
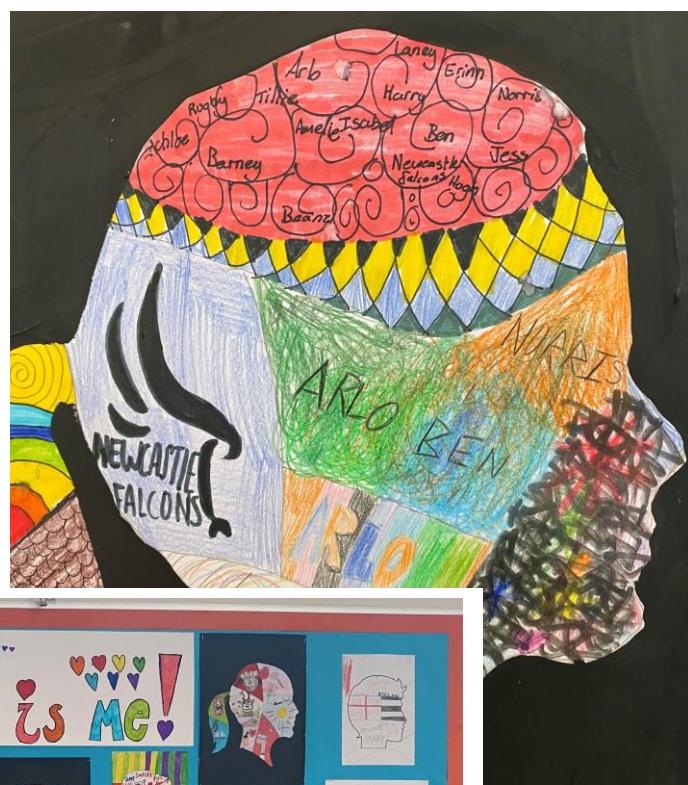
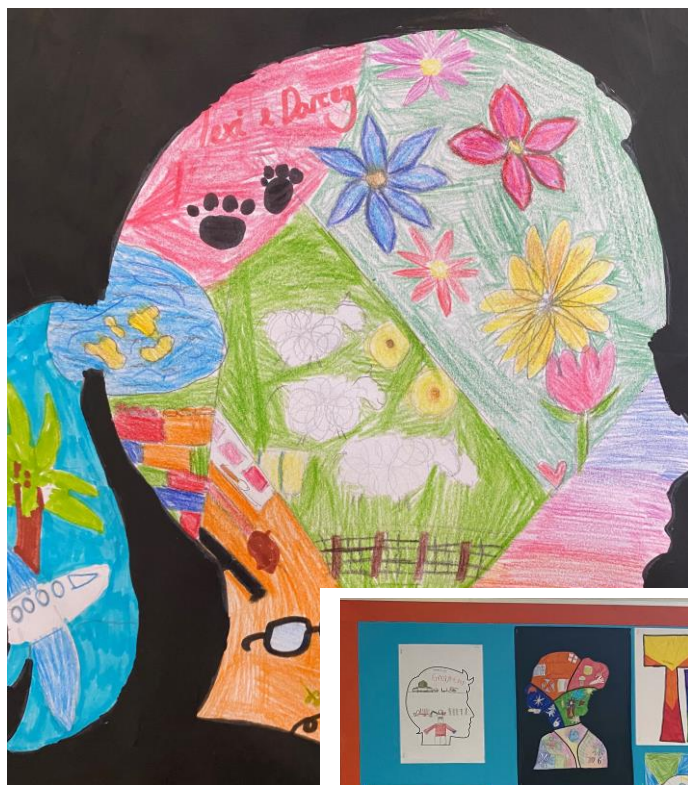






## This Is Me!

As a whole school, we have collaborated to create a display to celebrate LGBTQ History month, looking at identity. Our 'This is me!' project focuses on how everyone is unique, but that we can also have things in common with each other. When we look at the whole school together, students have found that they might have lots of things in common with someone, one or two things, or, no things at all. Together, however, we all create an exciting community filled with unique and amazing people!







## Covid-19 Update

On 21<sup>st</sup> February, the Prime Minister set out the next phase of the Government's Covid-19 response. Please find below a summary of key points and how we have responded as a school.

- Contacts are no longer required to self-isolate or advised to take daily tests. Contact tracing has ended.
- Face coverings are no longer advised for pupils, staff and visitors in classrooms or communal areas. However, we will support anyone who wishes to continue to wear a face covering in and around school.
- Our hand cleaning regime in school will continue.
- We will keep occupied spaces well ventilated.
- The respiratory hygiene recommendation of, 'catch it, bin it, kill it' approach continues to be promoted across school.

### Testing:

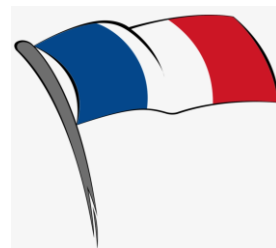
- Students and staff are no longer required to take part in regular asymptomatic testing but should follow the advice on testing for the general population which you can find [here](#).
- If you have any of the main symptoms of Covid-19 (a recent onset of a new continuous cough; a high temperature; or a loss of, or change in, your normal sense of taste or smell) you should order a PCR test. You are advised to stay at home and avoid contact with other people while you wait for the test result.
- If you test positive, you should continue to stay at home and avoid contact with other people. If you can, you should let people who you have been in close contact with know about your positive test result.
- Children and young people with Covid-19 should not attend school while they are infectious. They should take an LFD test from five days after their symptoms started (or the day their test was taken if they did not have symptoms) followed by another one the next day. If both these tests results are negative, they should return to school as long as they feel well enough to do so and do not have a temperature.
- Children and young people who live with someone who has Covid-19 should continue to attend school as normal.

If you have any questions or concerns about the above information, please don't hesitate to contact the school office.



**Mrs Davis**

It was lovely to welcome Mrs Davis into school this week as she got to meet our staff and most of our children. Mrs Davis joins us after Easter as our new MFL lead and can't wait to get started!





## Dates for your diary

Monday 7 <sup>th</sup> March	Visiting author (Dan Smith) – writing workshops
Wednesday 9 <sup>th</sup> March pupils	School Lunch Taster Afternoon – parents &
Friday 18 <sup>th</sup> March	STEM – Sea Cadets Workshop – KS3
Thursday 24 <sup>th</sup> March	Northumbria Police – Hate Crime – KS3
Monday 28 <sup>th</sup> March	<b>Wellbeing Week – PE kit every day</b> (Y5 – Y8)
Monday 28 <sup>th</sup> March	Bikeability Week (more details to follow)
Monday 4 <sup>th</sup> April	Book Fair – in school all week
Friday 8 <sup>th</sup> April	School closes for Easter holidays